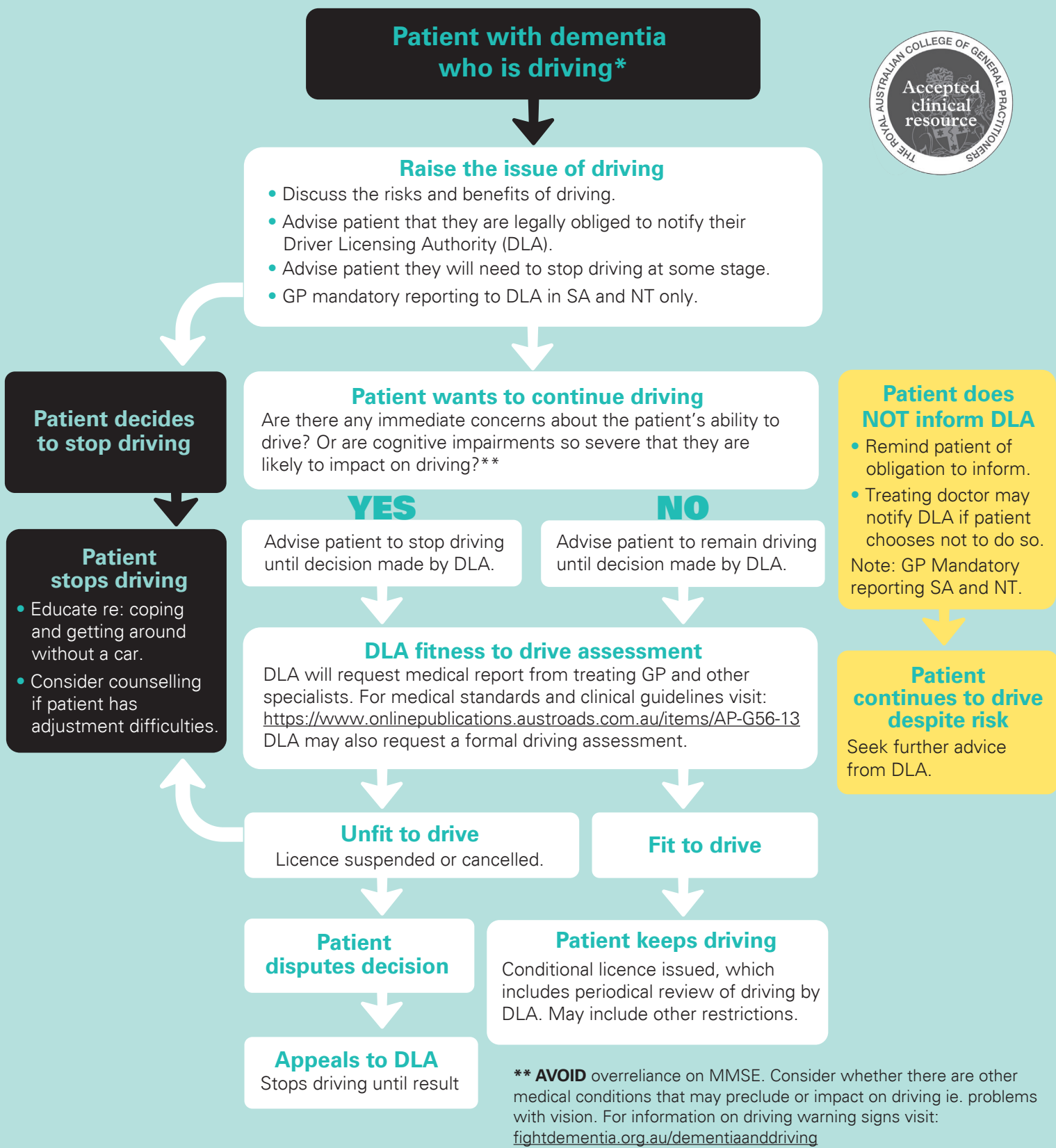


DEMENTIA AND DRIVING PATHWAY

FOR CLINICIANS AND HEALTHCARE PROFESSIONALS



* **WHERE** there are signs of cognitive impairment but no diagnosis, undertake appropriate assessment with patient. See <https://vic.fightdementia.org.au/support-and-services/health-professionals> and refer the patient to a memory clinic, geriatrician or neurologist.

RAISE the issue of driving with all patients with dementia or mild cognitive impairment.

DOCUMENT in clinical notes/records: patient's car driving status; advice or recommendations to patient; discussions pre-assessment and any concerns from patient or family.

WHERE family members and carers are accessible and available, consider the important role they play in supporting the driver to stop driving. Refer patients, family and carers to Alzheimer's Australia for information and support.

Alzheimer's Australia March 2015

For further information and resources:
FIGHTDEMENTIA.ORG.AU/DEMENTIAANDDRIVING

