

Illawarra Public Dementia Forum

Dementia: Are we listening?



Andrew Mills
Alzheimer's Australia NSW
15 August 2017

WHAT IS DEMENTIA?

Dementia describes the symptoms of a large group of illnesses. It is a fatal progressive, disease of the brain.

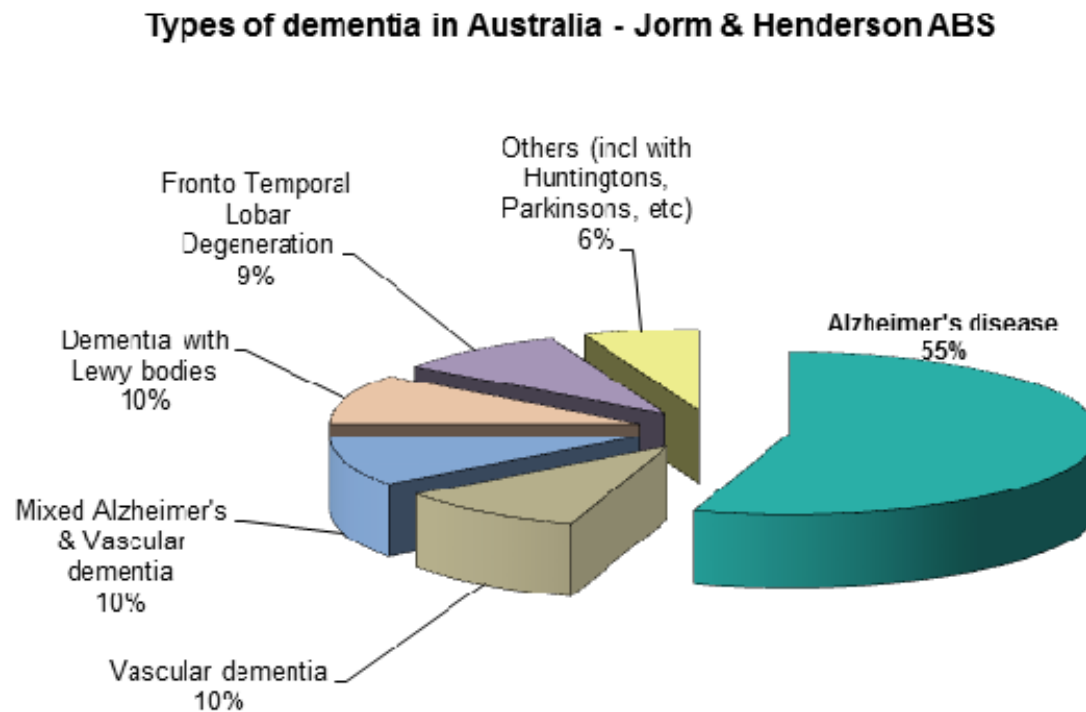
It may cause a loss of memory, intellect, rationality, social skills or what would be considered normal emotional reactions.

WHO GETS DEMENTIA?

- Most people with dementia are older, but it is important to remember most older people do not get dementia
- **Dementia** is not a normal part of ageing.
- People in their 40s and 50s can also have dementia. This is called Younger Onset Dementia



TYPES OF DEMENTIA

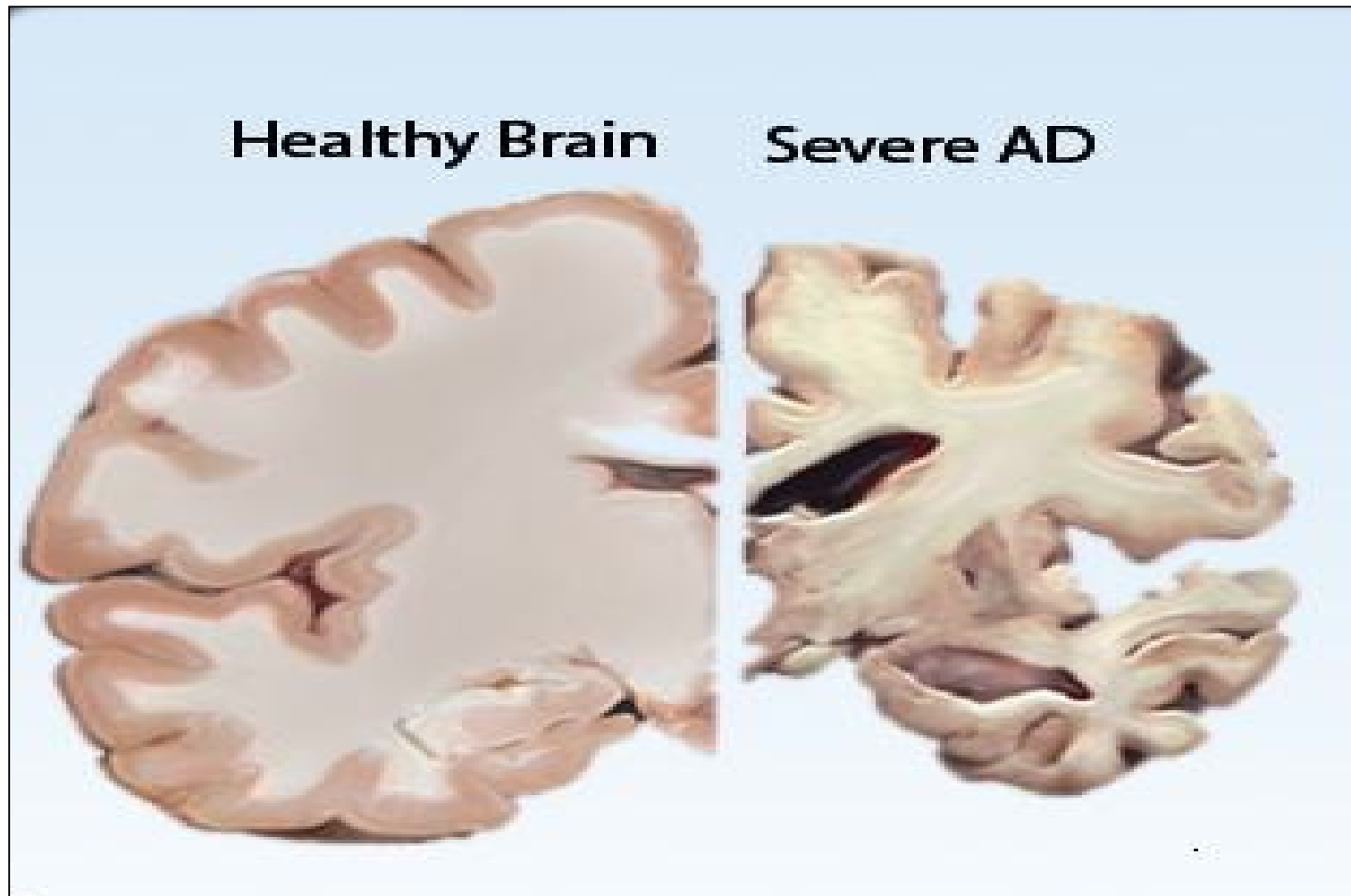


There are over 100 different types of dementia.

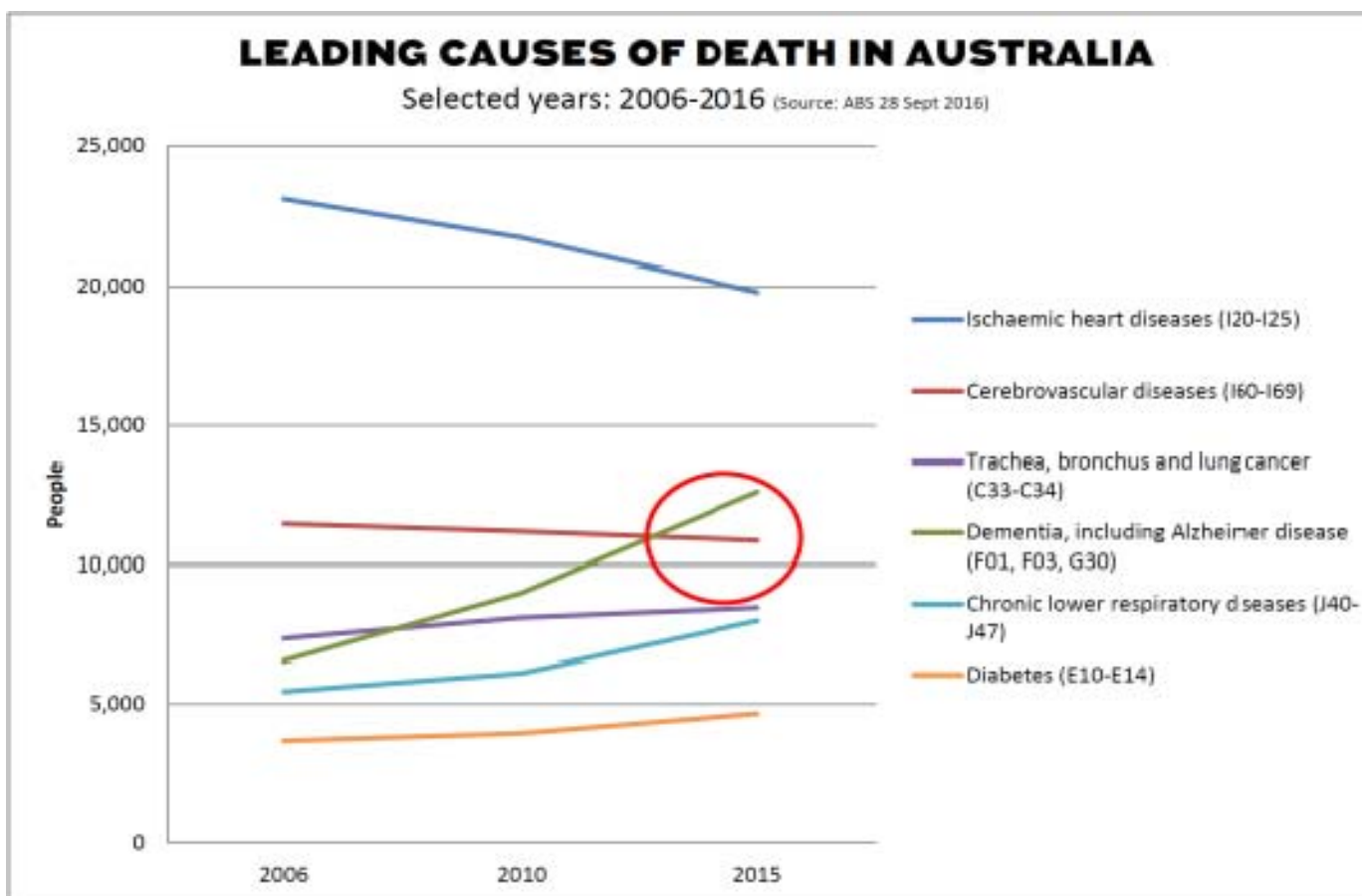
The most common type is Alzheimer's disease.

In Australia this accounts for around 50-70% of all types of dementia.

COMPARISON OF HEALTHY / UNHEALTHY BRAIN



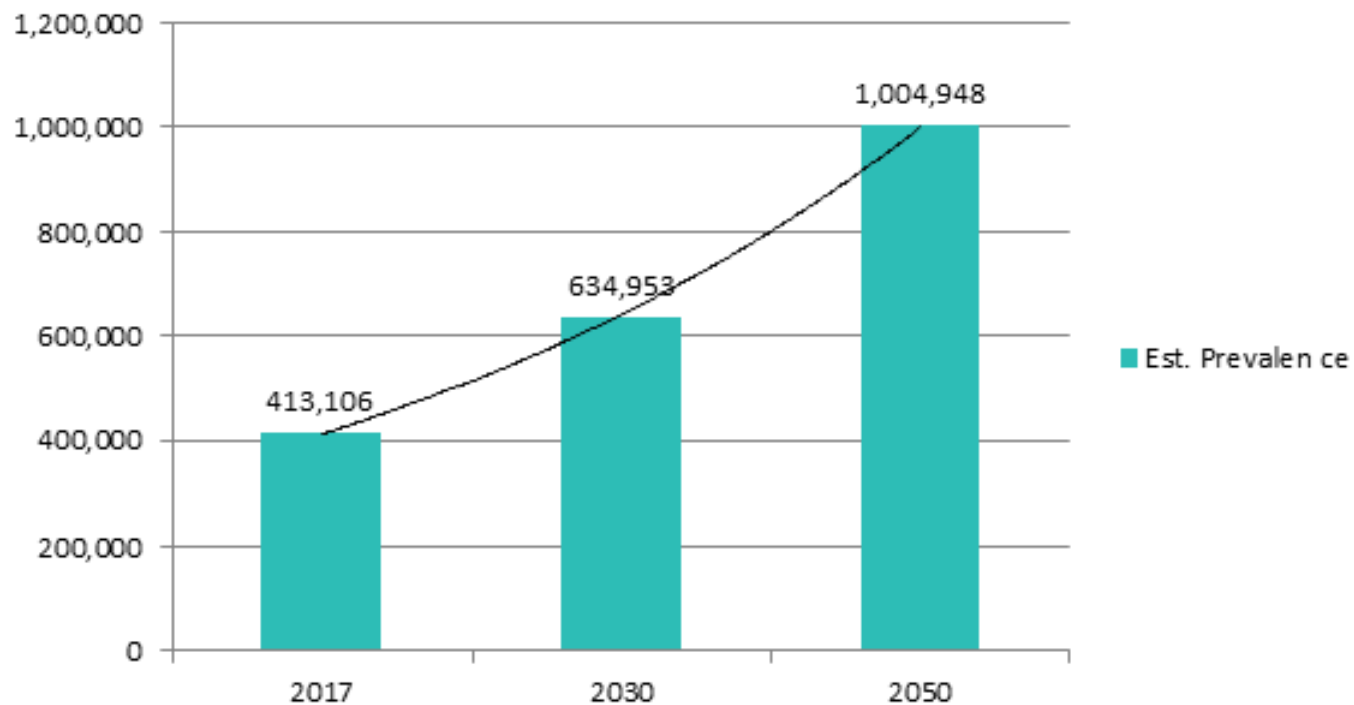
DEMENTIA IS SECOND LEADING CAUSE OF DEATH



DEMENTIA PREVALENCE: AUSTRALIA

Projected dementia prevalence in Australia 2017-2050

(Source: Economic Cost of Dementia in Australia
2016-2056), December 2016

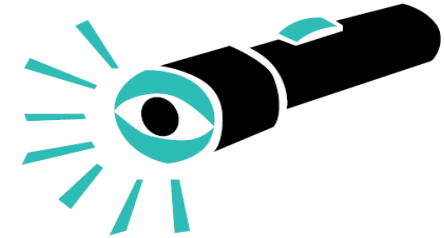


TOP 10 PREVALENCE BY NSW ELECTORATE 2017-2050

	State Electoral Division (SED)	2017
1	Myall Lakes	2,289
2	Tweed	2,238
3	Port Macquarie	2,230
4	Bega	2,167
5	Oxley	2,061
6	Clarence	1,986
7	South Coast	1,978
8	Murray	1,974
9	Goulburn	1,863
10	The Entrance	1,861

	State Electoral Division (SED)	2050	Growth 2017-2050
1	Camden	5,086	363%
2	Bega	4,787	121%
3	Port Macquarie	4,518	103%
4	Tweed	4,511	102%
5	Parramatta	4,484	186%
6	Myall Lakes	4,409	93%
7	Clarence	4,219	112%
8	Oxley	4,139	101%
9	Kiama	4,097	123%
10	South Coast	3,951	100%

PREVALENCE IN THIS AREA



STATE

ELECTORATE 2017 2050 GROWTH #RANK/93

KIAMA **1837** **4097** **123%** **# 9**

SHELL HARBOUR **1618** **3730** **131%** **# 22**

WOLLONGONG **1772** **3364** **90%** **# 44**

WHAT DO AUSTRALIANS KNOW ABOUT DEMENTIA? (IPSOS REPORT)

- 60% of Australian adults have a family member with dementia
- 7 in 10 know 'very little' about dementia
- Over 25% surveyed believe dementia is a normal part of ageing
- 25% said they find dementia frightening
- Almost 50% didn't realise dementia was fatal
- 80% said they would like to know more about dementia

ALZNSW IN THE ILLAWARRA

- Consumer Advisory Group
- Memory Walk & Jog events
- Living with Dementia programs
- Connections with Aboriginal Communities and CALD groups
- Two Younger Onset Dementia Key Workers based in Wollongong
- Carer support and social café groups
- Dementia specific counselling services
- Dementia specific education sessions

We have a commitment to providing ongoing support to people living with dementia in the Illawarra Region

NATIONAL DEMENTIA HELPLINE

1800 100 500

Let's chat!

“ Online Webchat is now available
9am-5pm EST Monday to Friday
with the National Dementia Helpline ”

fightdementia.org.au/helpline/webchat

NATIONAL DEMENTIA HELPLINE 1800 100 500

**ALZHEIMER'S AND DEMENTIA
AUSTRALIA AND HOPE**

**UNDERSTAND ALZHEIMER'S
EDUCATE AUSTRALIA**
FIGHTDEMENTIA.ORG.AU

DEMENTIA: ARE WE LISTENING?

Listening:

The act of taking notice of and acting on what someone says



DEMENTIA: ARE WE LISTENING?

Empowerment:

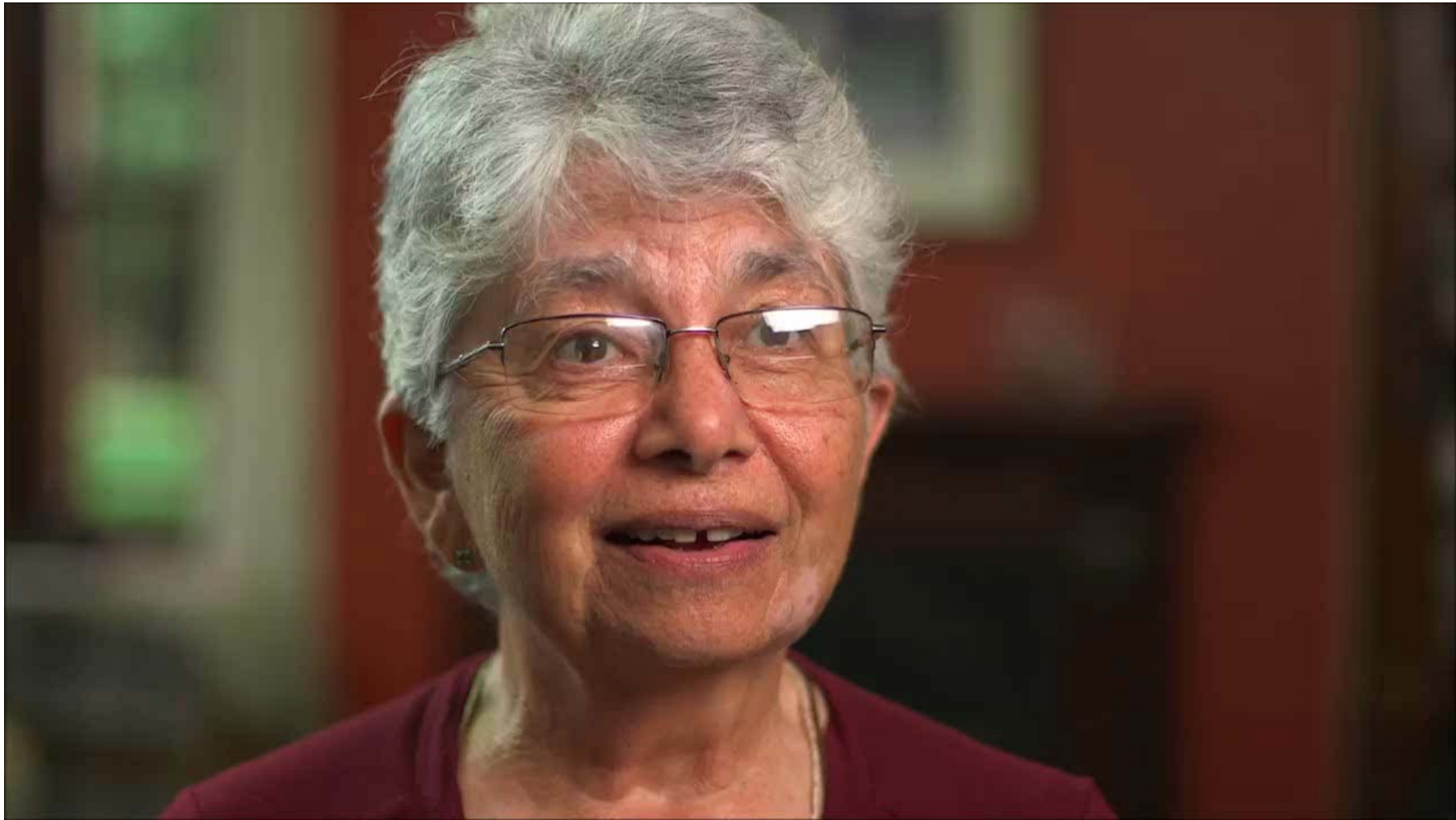
The process of becoming stronger and more confident, especially in controlling one's life



LISTEN TO THE VOICES OF PEOPLE WITH DEMENTIA



WHAT SHOULD PEOPLE KNOW ABOUT DEMENTIA?



**UNDERSTAND ALZHEIMER'S
EDUCATE AUSTRALIA**
FIGHTDEMENTIA.ORG.AU



THANK YOU