

NORTHERN TERRITORY
ANNUAL REPORT
2012

FIGHT ALZHEIMER'S
SAVE AUSTRALIA
FIGHTDEMENTIA.ORG.AU

CONTENTS

President's Report.....	4
Chief Executive Officer's Report	5
Key Issues	6
Support Services	7
Activities	8
Home & Community Care.....	9
Education Services.....	11
Strategic Directions & Guiding Principles.....	12
Treasurer's Report.....	13
Personnel at 30 June 2012.....	15
Acknowledgements	16
Ambassador and Champions	17

P: (08) 8948 5228

CEO: Ruth Leslie-Rose

3/18 Bauhinia Street, Nightcliff NT 0810
PO Box 515, Nightcliff NT 0814
F: (08) 8948 5229

nt.admin.d@alzheimers.org.au
www.fightdementia.org.au

National Dementia Helpline: 1800 100 500

An Australian Government Initiative

PRESIDENT'S REPORT



Our Vision...

A society committed to the prevention of dementia while valuing and supporting people living with dementia

It has been a productive and rewarding year for Alzheimer's Australia in general and for Alzheimer's Australia NT Inc in particular.

In fact, worldwide it has been a stand out year in moving towards the understanding required and action needed to address the impact that Alzheimer's disease has, and will increasingly have, on all aspects of society if more is not done.

An unprecedented global call was made in a report from the World Health Organization and Alzheimer's Disease International in April 2012 for nations to recognise dementia as a public health crisis and to make dementia a global health priority. Key messages were offered, with the first one being that dementia is not a normal part of ageing! Other key messages emphasise the enormity of the problem, the staggering financial cost challenging health systems and the goal

that people with dementia be supported to continue to engage with society and enjoy a good quality of life.

Additionally the overwhelming demands of dementia for caregivers requires support in the social, financial, medical and legal realms. The charge from this report is worth repeating..

The time to act is now by:

- Promoting a dementia-friendly society globally;
- Making dementia a national and social care priority worldwide;
- Improving public and professional attitudes and understanding;
- Investing in health and social systems to improve care services to people with dementia and their caregivers;
- Increasing the priority given to dementia in public health research.

Australia has been a leader in recognising the needs and challenges of dementia.

There are an estimated 300,000 people living with dementia in Australia and 1.2 million people providing support for them. Dementia is the single greatest cause of disability in older Australians. In 2012, the Federal Government took another leading step and recognised dementia as a national health priority.

A package accompanying this recognition will provide good policy for effective programs. The Federal Government has budgeted to support it over 5 years. Still there is more to be done and promoted, specifically around research for dementia and the search for a breakthrough.

So what does this mean in terms of Alzheimer's Australia NT Inc? As President of the Board I can say the Board is fully supportive of enhancing dementia awareness, early diagnosis and intervention, care and support, quality of life for those with dementia to end of life,

as well as investment in research. The activity outlined in this report confirms this.

The advocacy, lobbying and awareness raising achieved in the NT has been astonishing. The passion and enthusiasm of Alzheimer's Australia NT staff for signing up and promoting champions is only equalled by the generous commitment of those champions. Personal support from individuals past and present from all levels of the government in the NT have been both moving and encouraging. Also, the dedication, creativity and success around NT fundraising is not to be overlooked. Professional development for staff - translating into good quality education for the public - is a key priority for the organisation.

There has been increasing engagement with the community, including with health care professionals, in open forums, workshops and talks by inspiring and informed visiting experts.

A focus beyond Darwin remains important and during the past year, the organisation has supported the Alice Springs office well.

There is a keen and committed Board of eight serving Alzheimer's Australia NT. The Board brings an array of needed and most appreciated talents to the table and many thanks go to them for their time and dedication. The NT Board is committed to finding national efficiencies for Alzheimer's Australia nationwide and will be collaboratively but responsibly working toward that end.

The staff of Alzheimer's Australia NT, from the CEO, throughout the organisation are the real troopers and should be gratefully acknowledged for their committed, productive and caring work.

Dr. Vicki Krause
President
November 2012

CHIEF EXECUTIVE OFFICER'S REPORT

This Annual Report will provide information to our members and other stakeholders about our activities and will:

- Describe challenges and achievements during the year;
- outline future directions; and
- summarise progress.

Activities and Achievements

The business plan developed in June 2011 contained the following objectives:

- Meeting existing contractual obligations;
- Maintaining quality;
- Continue to improve support for Alice Springs;
- Continue collaboration with the SA NT Dementia Training Study Centre;
- Enable eligibility to deliver Community Aged Care Packages;
- Promote dementia awareness in the Northern Territory;
- Reduce service gaps through collaboration; and
- Generate additional revenue.

Contractual Obligations

The targets set in funding agreements were met and reported against in a timely manner. These included:

- Home and Community Care Darwin & Katherine;
- Home and Community Care Alice Springs & Tennant Creek;
- National Dementia Support Program;
- Dementia Care Essentials; and
- Minor funding agreements.

Quality

In October 2011 the Alzheimer's Australia Federation proceeded with rebranding following professional advice from Interbrand. Since then, brochures have been updated to reflect the new brand.

This provided an opportunity to review all written material and update the content to ensure information was current.

The organisation has a strong culture of quality and safety and strives to ensure that systems are changed in response to issues as they are identified. There have been no complaints received in the last twelve months. When complaints are received, however, they are viewed as a positive opportunity to improve services.

Alice Springs

Nicole O'Connor was appointed as the new Alice Springs Family Support Officer in September 2011, following the departure of Wendy De Souza in late July. During the recruitment period, Ray Norman, Anne Pike and Gail Marsh ensured that the office was attended and took the opportunity to review the service and implement improved processes.

Nicole is well thought of by Alice Springs service providers, her clients, the community and her colleagues. She visited Darwin in May 2012 to meet the Darwin team and to attend a presentation by Professor Sube Banerjee. Judy Buckley, the Board Member representing Alice Springs, has been a great support for the Alice Springs service.

Research

Support for research has been provided through a donation sent to the Alzheimer's Australia Dementia Research Foundation. There are now two NT representatives on the Alzheimer's Australia Dementia Research Consumer Advisory Group. A local research proposal by a Charles Darwin University student was supported.



Our Mission...
To provide quality dementia services and leadership in advocacy, policy and research

SA NT Dementia Training Study Centre (SA NT DTSC)

The SA NT DTSC is tasked with delivering ongoing professional development at a post graduate level to health care professionals in the Northern Territory.

During this reporting period, Alzheimer's Australia NT and the SA NT DTSC agreed to provide a seminar in Alice Springs, which was repeated in Darwin. Hot Topics in Dementia covered important areas which had been identified by NT Dementia Services. These seminars occurred in April 2012.

Community Aged Care Packages

Staff have felt for some time that providing Community Aged Care Packages would assist the organisation to provide an improved continuum of care for clients. Eligibility to provide Community Aged Care Packages is dependent upon an organisation becoming an approved provider. An application was submitted in early 2012 to the Department of Health and Ageing which was approved in June 2012. There has not been an opportunity to apply for packages yet.

Awareness

Territory FM has continued to assist Alzheimer's Australia NT to increase awareness about dementia in the Northern Territory by providing regular broadcast spots and additional interviews during Dementia Awareness Week. Their support is valued and appreciated. Discussing issues reduces the stigma surrounding dementia, which in turn reduces the social isolation experienced by many people.

In July 2011, Baroness Susan Greenfield visited Darwin and outlined her ideas about the future of world dementia research at a dinner held at Sky City. Many of the 170 guests had not attended Alzheimer's Australia NT events before.

A march on Parliament House, attended by NT representatives, commenced the "Fight Dementia" campaign in October 2011. This campaign responds to a critical need to address the challenges presented by the ageing population in Australia. An increased incidence in dementia is related to the rise in the numbers of older people, thanks to improvements in modern medicine.

Dementia Awareness Week (DAW) 2011 was held in the Northern Territory from the 16th to the 26th of September and was marked by; our usual newspaper

advertorial coverage; radio interviews; the 5th Tea Dance in Darwin; Grand Rounds with Dr Phillip Morris in Alice Springs and with Dr Lowe at the NT GP Network in Darwin.

On Valentine's Day 2012 we asked Territorians in Darwin and Alice Springs what they would do if the person they loved didn't remember them. The campaign focused on encouraging people to become Dementia Champions and sign Valentine's Day cards which were then emailed to key politicians. The cards contained requests for increased funding for dementia services and research in the 2011 budget. The campaign was successful with increased funding being provided for services.

Ita Buttrose, Alzheimer's Australia National President, visited Darwin in March 2012 to meet the Darwin team, Champions and attend a fundraising dinner. CakesNT donated cupcakes with the new teal coloured icing and some of our straplines. The cupcakes were a huge hit and looked fabulous!

Sube Banerjee, Professor of Mental Health and Ageing at Kings College in Cambridge, visited Darwin in May 2012 and spoke to doctors and health care professionals about the risks of using antipsychotic medications for people with dementia. He was also interviewed on ABC radio.

Collaboration

Darwin and Alice Springs staff attended various network meetings which provided participants with the opportunities to discuss common issues relevant to dementia care in the Northern Territory.

Additional Revenue

The Education team successfully re-negotiated a funding agreement with support from Alzheimer's Australia Victoria which is the Registered Training Organisation

and lead organisation in the contract with the Department of Health and Ageing. The team also provided P3 aged care personal safety to health care staff and nationally accredited dementia care training to NT communities for Charles Darwin University.

Several small funding submissions to the Northern Territory Government were successful during the year supporting the Tea Dance, Seniors Month activities, a replacement for the bus and computers for Darwin and Alice Springs libraries.

A generous member of the public hosted a fundraising dinner during March 2012. This unprecedented act of generosity has assisted the provision of services beyond the limitations of funding.

Blue Illusions in Casuarina Shopping Square supported the association by holding a fashion parade in April. Staff and Champions in Darwin participated and raised around \$800.

Tai Chi sessions were provided to the general public for 10 weeks.

Funding challenges and previous year deficit

At the conclusion of the 2011 financial year the association reported a financial deficit. While this was due to a reduction in funding and conservative accounting practices, the need to find additional untied revenue was highlighted. The activities described above, along with significant cost cutting and a huge effort by the team to do more with less, allowed the organisation to finish this financial year with a modest surplus. Ray Norman was particularly helpful. It would have been a very difficult to achieve this result without him.

SUPPORT SERVICES

Alzheimer's Australia NT Support Services is funded through the Australian Government's National Dementia Support Program (NDSP), and funding for our HACC activities has transitioned to the Federal Government over the past 2 years. It will be finalised from the 1st July 2012 and require reporting directly to the Department of Health and Ageing.

The NDSP funds the following services:

- National Dementia Helpline;
- counselling and support;
- early intervention strategies, including the Living with Memory Loss Program;
- specialised dementia library;
- social, recreational and therapeutic activities through our Dementia and Memory Community Centres (DMCC); and
- public awareness raising activities during our Health and Wellbeing workshops. Some of the popular topics were fitness and exercise, future financial and estate planning, use of technology, assistive aids and applications.

Seniors Month Activity

Held in August each year, this event continues to grow in popularity with locals and visitors alike and this year was no exception. Alzheimer's Australia NT worked in partnership with Darwin City Council to provide two sessions for seniors that encouraged a 'brain healthy' lifestyle. These sessions were held at the Jingili Water gardens where morning tea and lunch were provided to participants.

The program included Alzheimer's Australia's Mind Your Mind information sessions (which informs people about dementia risk reduction strategies for memory loss), ball and balance exercises, Tai Chi, gentle walking groups, and live musical entertainment by Jim Harte.

Dementia Awareness Week

Once again, the Greek Orthodox School in Nightcliff kindly provided us their hall which is a fantastic venue for dancing and socialising. The theme for this year was "Dancing Around the World" celebrating the cultural diversity of our Northern Territory population. Over 100 people attended the event. Linda Masters was a superb Master of Ceremonies, with the dance opened by the Essington Junior School Choir. The Groovy Grans amazed us with their slick routines once again. Exercise Groups took to the stage with their usual sense of fun, and a highlight of the day was a performance by the Jameelah Belly Dancers.

Gardening Project

Alzheimer's Australia NT has wanted to establish a community garden for some time now. Following negotiations with Darwin City Council and funding from DBMAS (Dementia Behaviour Management Advisory Service, Frontier Services), the garden was born. The aim of this project is to provide a therapeutic activity, which is meaningful, sociable and fulfilling.

Many of our clients have enjoyed gardening at home for many years but find themselves unable to continue or initiate gardening at home now. Clients and their carers have prepared seedlings in trays, whilst waiting for the garden beds to be constructed at the Nightcliff Community Centre. Other Alzheimer's Australia NT groups have contributed to the project. Our fellow Nightcliff Community Centre tenants are also excited about our project.

Garden Project, Stage 2

With permission from the Darwin City Council, stage 2 of the garden has commenced. Bunning's Warehouse staff spent a morning setting up the shade house and reticulation and planting occurred over the next few months. With



Tea Dance activities



Tea Dance activities

the help of everyone, the garden began taking shape and offers another area for our clients to be involved in.

Scarecrows

Following weeks of planning and activities that included scouring local Op Shops for clothing and accessories and utilising their individual skills, the groups created three of their very own spectacular scarecrows affectionately named Rustle, Hay-zel and Strawn Crow.

Choir “The Unforgettables”

Alzheimer’s Australia NT is delighted to announce that we now have a choir led by Jim Harte with the assistance of Annette Harte. Rehearsals commenced on alternating Wednesdays from the 1st of February 2012. The aim of the choir is to have as many clients and carers getting together to participate as possible. Alzheimer’s Australia NT staff have also shown an interest in joining.

Therapy Sessions

Sessions this year included Horticultural and Creative Art Therapy. Professional artists generously gave their time and expertise over six months to enable participation by clients and carers. We thank them for sharing their knowledge and love of the arts with us. Horticultural Therapy commenced in May 2011 and involved the development of our new garden in Nightcliff.

Health and Wellbeing and Memory Matters

Health and Wellbeing and Memory Matters activities run on the first and second Friday of each month. Health and Wellbeing involves a guest speaker and relaxation or gentle exercise activities whilst Memory Matters challenges participants to complete various puzzles and games. Both of these two hour sessions

have become increasingly popular with the general public.

Volunteers

Alzheimer’s Australia NT would like to thank our wonderful volunteers for their assistance with activities and office work, which are a great benefit to our organisation. Future plans are to extend our volunteer program to utilise the vast and extensive skills that volunteers can bring to an organisation.

Carers Week Activities

During Carers Week, Alzheimer’s Australia NT hosted a day trip to the Alice Springs Desert Park, to give carers a well-earned break from their role for a couple of hours. Darwin carers were treated to a pamper session in the outdoors at the Jingili Water Gardens and a gourmet lunch. These events were supported by funding from Carers NT.

Carers Support Groups

This group for family, friends or carers of people living with dementia, meet monthly and provides an opportunity to relax with like-minded people, share stories and gain information. Guest speakers are scheduled from relevant local organisations in Darwin and Alice Springs.

Life Memory Albums

Life Memory Albums encourage individuals to construct an album representing their life history through recollecting and describing memories. The albums can be passed through family generations, displaying photographs, artwork, memorabilia and personal belongings creating a picture of a person’s life story. Clients enjoy retelling their experiences and sharing memories with family and friends.



Carers activity at Jingili Water Gardens



The Unforgettables choir



Scarecrows

HOME & COMMUNITY CARE

Art group Sessions

Alice Springs provides an art group activity to carers and people with dementia, who are interested in a social get together and share a love of art. Darwin Art group commenced this year also and offers a relaxing morning of art and a cuppa.

Home and Community Care (HACC) Central Australia

HACC funding also supports services in Alice Springs, Tennant Creek and provides:

Counselling/Support, Information and Advocacy for clients and carers and client reviews in Alice Springs and Tennant Creek Centre Based Day Care and Transport.

Service outputs are proving challenging due to staffing numbers in the Alice Springs office and strategies are being investigated for 2012/13.

Home and Community Care (HACC) Darwin & Rural

Home and Community Care (HACC) funds the following services in Darwin and the Rural area:

- Day Respite
- Individual counselling and support
- Transport
- Dementia monitoring program; and
- Carer support groups.

Home and Community Care (HACC) Katherine

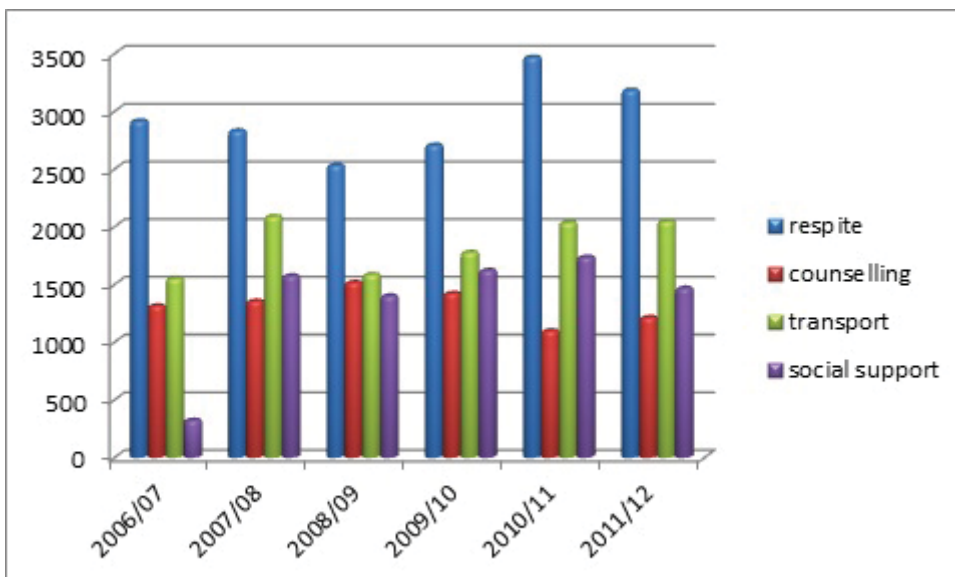
Alzheimer's Australia NT's HACC service in Katherine provides Counselling, Support, Information and Advocacy to the people of Katherine who have dementia, their families and carers. Darwin Support Services staff travel to Katherine each quarter to provide a face to face service. Additional telephone support is available at other times.



Stage 2 of the gardening project with the Bunnings team



Art Therapy Group



HOME AND COMMUNITY CARE

Stepping Out Group Activities

These groups based in both Darwin and Alice Springs provides a weekly Respite Service for families of people with dementia. The groups are based around a variety of activities, and encourage the maintenance of skills and abilities with social connections.

Art & Alzheimer's Outreach Program

Arts, health, education and community participants were invited to attend an Art and Alzheimer's Training workshop. The two day training assisted arts and health professionals to develop skills to facilitate guided tours of works of art for people with dementia. The National Gallery of Australia's Art and Alzheimer's Outreach Program, funded by the Thyne Reid Foundation and the Department of Health and Ageing community grants, has been developed to assist urban and regional communities to implement sustainable programs.

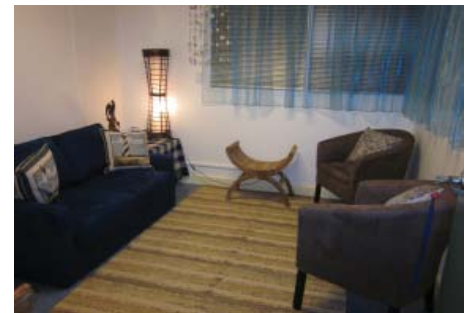
The Art and Alzheimer's Outreach Program is based on the program developed at the National Gallery of Australia, which enables people living with dementia

to connect with the world in an enriching and life-enhancing way.

Further Achievements this year

The counselling room has been newly decorated with the financial support provided from the Department of Justice Community Benefit Fund.

The Marie Gray Library and the Garden of Memories were officially opened in September 2011 by Dr Valerie Asche.



Newly refurbished Counselling Room



Ruth Leslie-Rose and Jane Aargard at the opening of The Garden of Memories



Dr Valerie Asche AM and Bill Hancock at the opening of the Marie Gray Library

EDUCATION SERVICES

Alzheimer's Australia NT Education Service has continued to provide high quality dementia education courses and programs, information sessions and community displays throughout the year.

Dementia Care Essentials (DCE)

Dementia Care Essentials III and IV are the core units within Certificate III and IV in Aged Care and successful completion is rewarded with a nationally recognised Statement of Attainment. Funded by the Department of Health and Ageing and facilitated through the Alzheimer's Australia Victoria Registered Training Organisation the units were conducted in Darwin, Alice Springs and Katherine. Remote and regional areas were serviced by virtue of an agreement with Charles Darwin University.

National Dementia Support Program (NDSP)

NDSP has provided continued funding enabling the provision of a range of education services to raise awareness of dementia and its effects through Carer Education Programs, Information Sessions, Non-accredited training, community displays, Service Access Liaison Officers (SALO) 'At Risk' Programs, and community awareness programs.

Carer Education

Carer Education runs throughout the year to provide education and information to family carers and interested friends.

Information Sessions

These sessions provide information to the general public and community groups to raise awareness of the incidence and effects of dementia and the benefits of healthy lifestyle choices.

Non-accredited Training

Non-accredited training is provided to a wide range of health professionals, including: doctors, nurses, students, care workers and family carers, addressing a wide range of issues relating to caring for people living with dementia.

Service Access Liaison Officers (SALO) "At Risk" program

The extension of the supplementary National Dementia Support Program (NDSP) grant from the Department of Health and Ageing (DoHA) has enabled the continued provision of basic dementia information and risk reduction strategies to people engaged in drug and alcohol rehabilitation programs in Darwin, Katherine and Alice Springs.

Education sessions are also provided in Darwin and Alice Springs Correctional Centres. The presentations of 'Mind Your Mind' and 'What is Dementia' are welcomed by the participants.

Awareness Raising - Community Displays

A number of Awareness Raising activities and Community Displays have taken place in Darwin, Katherine and Alice Springs regions over the past twelve months, including: regular radio segments and interviews, displays in the Darwin Mall, Community presentations on dementia and risk reduction strategies, and morning tea for Culturally Diverse Seniors (CALD).



Dementia Care Essentials III held in Katherine



Guest speaker from DBMAS at Jingili Water Gardens - Seniors Month



Sue Bradley, Professor Colleen Cartwright and Ruth Leslie-Rose - End of Life Planning

STRATEGIC DIRECTIONS & GUIDING PRINCIPLES

Nearly 300,000 people live with dementia in Australia and without a significant breakthrough that is expected to soar to nearly 1,000,000 by 2050 due to the ageing population. Each week there are 1,600 more people diagnosed with dementia in Australia who need support. Dementia is now the third leading cause of death in Australia after heart disease and stroke, it is fatal and there is no cure. A greater focus is needed on strategies to achieve healthy ageing and postponing cognitive decline.

The strategic direction of Alzheimer's Australia NT is aligned with the strategic direction of the National organisation. Annual business plans reflect the principles contained in the strategic plan and focus on the key priorities identified by the board, staff and consumers for each business year.

The key focus areas and guiding principles are listed below:

Focus

- Advocacy and empowering consumers
- Quality dementia care
- Understanding and awareness of dementia
- Prevention, risk reduction and delayed onset of dementia
- Organisational sustainability

Guiding Principles

People living with dementia, their families and carers have the right to:

- Access high quality support services;
- Access flexible, responsive and timely support services;
- Be treated with dignity, courtesy and respect, to have their feelings validated and their choices and individual beliefs respected; and

- Access services that support both the person with dementia and their families, ensuring that the needs of the person with dementia are the primary focus and priority.

Future Directions

In the period July 2012 to June 2013 Alzheimer's Australia NT plans to:

- Meet contractual obligations and maximise operational efficiency
- Continue to seek revenue opportunities to promote flexibility of services and support administrative overheads
- Maintain improved support for Alice Springs and look for opportunities to improve collaboration with other NT service providers
- Apply for community aged care packages
- Continue to improve awareness of services available, issues facing people with dementia and their families and reduce stigma surrounding dementia
- Place key workers to assist people with younger onset dementia in Darwin and Alice Springs as funding becomes available.
- Support research

Summary

I would like to acknowledge and thank all our generous supporters who donated an unprecedented amount of money to the Association during the last 12 months, allowing us to begin to provide enhanced support to our clients. I would like to thank all of the NT team for their dedication during the past year while providing excellent services for people with dementia, their families and carers. We faced some significant challenges and by working together collaboratively, flexibly and responsively, found ways to

overcome them. The financial results this year could not have been achieved without the excellent teamwork that was displayed. I am proud of what we have achieved.



Ruth Leslie-Rose

November 2012



Clare Martin, Baroness Susan Greenfield, Ruth Leslie-Rose and Sue Bradley

TREASURER'S REPORT

30 JUNE 2012



Our Financial Results

Total funding received for the 2011/2012 financial year grew modestly on the previous year due to, largely increased non-grant income. Total revenue was 3.9% above budget.

Decreased expenditure in the 2011/2012 year is largely due to personnel costs flowing from a smaller staffing profile at our Alice Springs office. Expenses in total were 2.4% below estimate.

The higher than budgeted income has combined with lower than budgeted expenditure to deliver a modest net surplus for the year, against a planned deficit.

Our Challenges

Own source income again increased on the previous year. Nonetheless, Northern Territory Government, Alzheimer's Australia and the Australian Government remain the major sources of funding for the Association. Australian Government funding reduced slightly against the previous year which included the carry forward of unspent Dementia Community Grant received by the Association in 2009.

While some grants will expire in 2012/13 and 2013/14, current expectations are that major funding sources will be suitably renegotiated or replaced.

The impacts on the sector of policy decisions associated with returning federal budget to surplus are not clear yet, but will be monitored closely.

The budget focus for the association remains in containing expenditure, developing funding flexibility through new funding sources and on reinforcing planning to address funding risks.

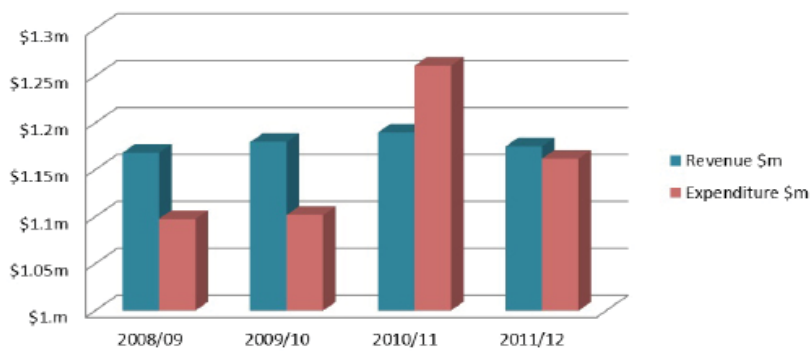
The Chief Executive Officer Ruth Leslie-Rose and her team have worked tirelessly to deliver on the Association's objectives and this year's financial results are due in no small part to their ongoing dedication to the sound management.

Jacqueline Dowling

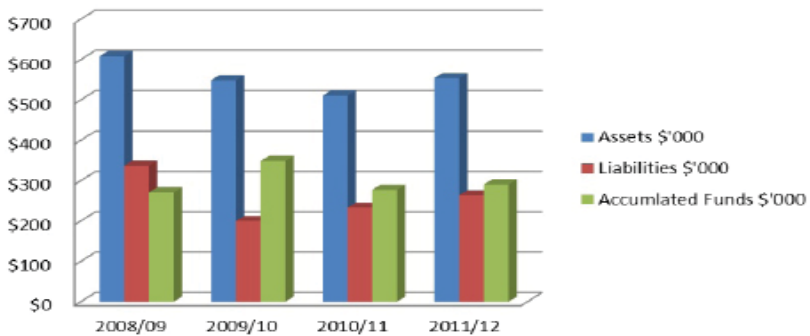
*Honorary Treasurer
October 2012*

TREASURER'S REPORT

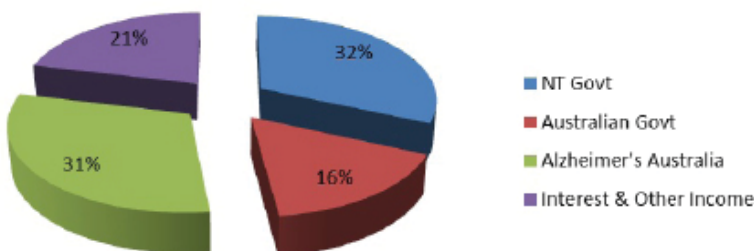
Annual Revenue & Expenditure Comparison



Financial Position 4 year Comparison



Revenue Sources 2011/12



PERSONNEL AT 30 JUNE 2012

Personal at 30 June 2012

Patron

- Dr Valerie Asche AM

Medical Advisor

- Dr Sadhana Mahajani

Board (Management Committee)

- Dr Vicki Krause President

National Alzheimer's Australia Board Delegate

Alzheimer's Australia Research Delegate

- Claire Bell Vice President
- Jacqueline Dowling Honorary Treasurer
- Elizabeth Furlonger Secretary/Public officer
- Judith Buckley Director
- Julie Nicholson Director
- Dr Sadhana Mahajani Director
- Ruth Leslie-Rose Chief Executive Officer

Staff

- Marsha Murray Manager Education Services
- Ray Norman Education Consultant
- Anne Pike Manager Support Services NT
- Kylie Beard Manager Finance
- Teresa Smithson Darwin Family Support Coordinator
- Susan Williams Early Stage Coordinator
- Norma Sutcliffe Stepping Out Officer
- Gillian McQuinn Stepping Out Assistant
- Annette Harte (Koch) Family Support Officer
- Marsha Murray Education Officer
- Tania Nash Executive Assistant/Communications
- Nicole O'Connor Alice Springs Family Support Coordinator



Alzheimer's Australia NT Staff, Board Members and Patron Dr. Valerie Asche AM with Ita Buttrose AO

ACKNOWLEDGEMENTS

We would like to acknowledge and thank our funding bodies, sponsors and supporters including:

- Australian Government - Department of Health and Ageing;
- Northern Territory Government - Department of Health and Community Services and Community Benefit Fund;
- Pfizer;
- Northern Territory Police - in kind support for the Safe Return Program in Darwin, Alice Springs and Katherine;
- Frontier Services and NT DBMAS;
- Territory FM – monthly radio information broadcasts;
- Curby's Trophies - engraving of Safe Return Bracelets;
- Nightcliff Newsagency, particularly Wanda Arrigo for fundraising on our behalf;
- CakesNT;
- Bakers Delight Darwin;
- Penny's Fancy Dress;
- Jenny's Orchid Garden;
- Burnett House for supporting the annual CALD morning tea;
- Charles Darwin University for the use of their venues;
- Local politicians who have allowed us to use their community rooms for Stepping Out Groups;
- Greek Orthodox School;
- Palmerston Shopping Centre Community Wheel (Margo and Margaret) - for their kind donation of 20 Christmas bags;
- Bunning's - for the Garden of Memories makeover;
- Blue Illusion, Casuarina - for fundraising support;
- Lions Club, Alice Springs and Darwin;
- Active Realty;
- Rotary Club of Nightcliff;
- Country Women's Association - Darwin and Alice Springs;
- Jamealah Belly Dancers, Groovy Grans and the Essington School - for support of the Tea Dance;
- Office of Women's Policy - for purchase of a table, so that ten carers could attend the Australian Women of the Year Association luncheon;
- Jane Aagard
- Territory Care and Support Services
- Marie Gray - for her generous support of the Darwin Library
- Sue and Hugh Bradley
- R&C Mc Evoy
- Helen Gabel

- Margaret and Bas Wie
- Brooke Barnett
- Jasmine Jan
- John and Trish Robinson
- Bill and Cindy Roy
- Pedro Yap
- Hazel Glencross
- Ernie Hughen
- Janis Shaw
- Pat Rasmussen
- Les and Claire Fern
- Carole Guinane - for her quilt donation
- Barry Shackleton - for graphic design assistance; and
- Clare Bell of AA&P and her team for generous marketing support and assistance during the year

We also acknowledge and thank our Patron, Dr Valerie Asche, and Ms Ita Buttrose, as well as all volunteers involved in our work especially:

- Sue Bradley, Terri Harte, Jim Harte, Kathleen Short, Erin Wood, John Flynn, Kerone Byrne, Jean Foxon, Val Cowen, Roseanne Anning, Eve White, Pat Venturin, Helen Gabel, Margaret Glowacki, Pat Rasmussen, Jack Cranwell and Chor Sung.

We also wish to thank all our anonymous donors and our guest speakers who have passed on their skills and knowledge during our education courses, Carers Support Groups and Living with Memory Loss Groups.

We apologise if we have missed anyone in this list, we truly appreciate your help.

ALZHEIMER'S AUSTRALIA NT AMBASSADOR AND CHAMPIONS



Dr Valerie Asche AM and Ambassador Clare Martin



Peter Styles MLA with Ita Buttrose AO



Ita Buttrose AO with Natasha Griggs MP



Ruth Leslie-Rose, Ita Buttrose AO and Senator Trish Crossin